

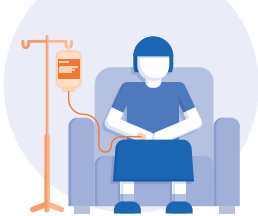
A DAY AT NCH&C



Norfolk Community
Health and Care
NHS Trust

1,516

patients seen in
their own home



664

patients seen
in clinics



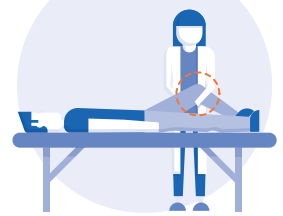
1,670

patients in contact with
Community Nursing and
Therapy Teams



179

patients seen in
physiotherapy clinics



586

phonecalls to patients
made by clinical staff



2,315

patients face to face
with clinical staff



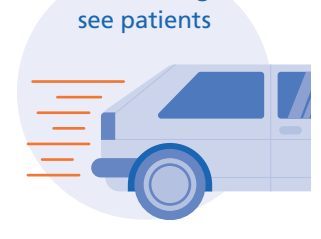
1,229

referrals made
to our services



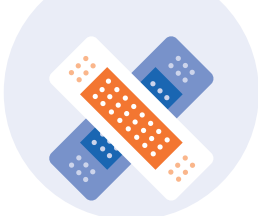
431

hours spent by clinical
staff travelling to
see patients



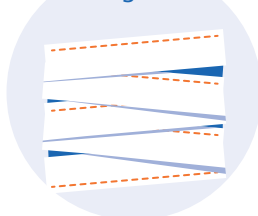
456

patients with
wounds cared for



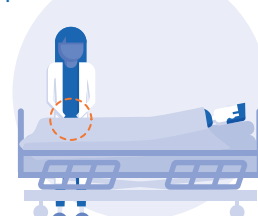
200

hours spent caring
for leg ulcers



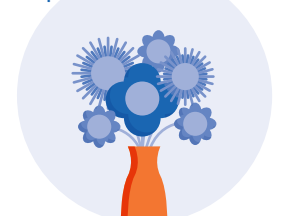
311

patients suffering with
pressure ulcers cared for



19

end of life
patients cared for



176

ill and vulnerable
children treated



44

patients in 'virtual wards',
where they stay in their
own homes supported



235

total beds across our
inpatient units, including
166 community beds and
69 specialist beds



54

patients in Residential
or Care Homes seen



OUR SERVICES

Admission Avoidance
Amputee Rehabilitation
Biomechanics
Cardiac Rehabilitation
Cardiac Vascular Disease
Care at Home
Children's Community Nursing
Children's Epilepsy
Children's Occupational Therapy
Children's Psychology
Children's Shortbreaks
City Reach (for the homeless)

Community Dentistry
Community Matrons
Community Nursing
Community Paediatricians
Community Podiatry
Contenance
COPD
Dermatology
Diabetes
Early Investment Team
Epilepsy
Heart Failure

Inpatient Rehabilitation
Inpatient Specialist Stroke Rehabilitation
Learning Disability
Lymphoedema
Neurology
Neurological Rehabilitation
Occupational Therapy
Orthopaedic Triage
Out of Hours Unplanned Care
Oxygen Management
Palliative Care
Phlebotomy

Physiotherapy
Pulmonary Rehabilitation
Specialist Nursing
Specialist Paediatric Contenance
Speech and Language Therapy
Stroke Early Supported Discharge
Sure Start Centres
Tissue Viability
Wheelchair Service